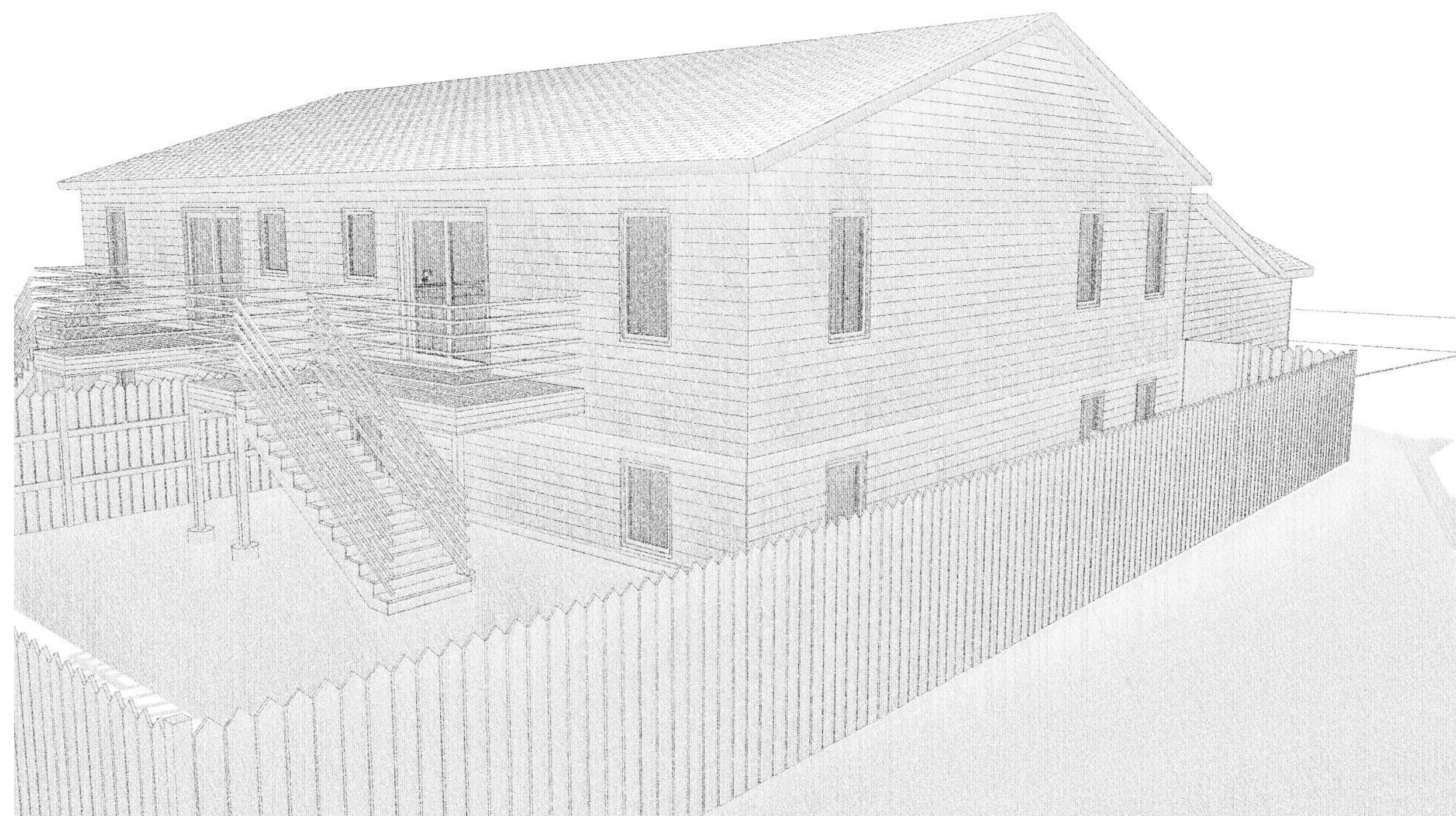
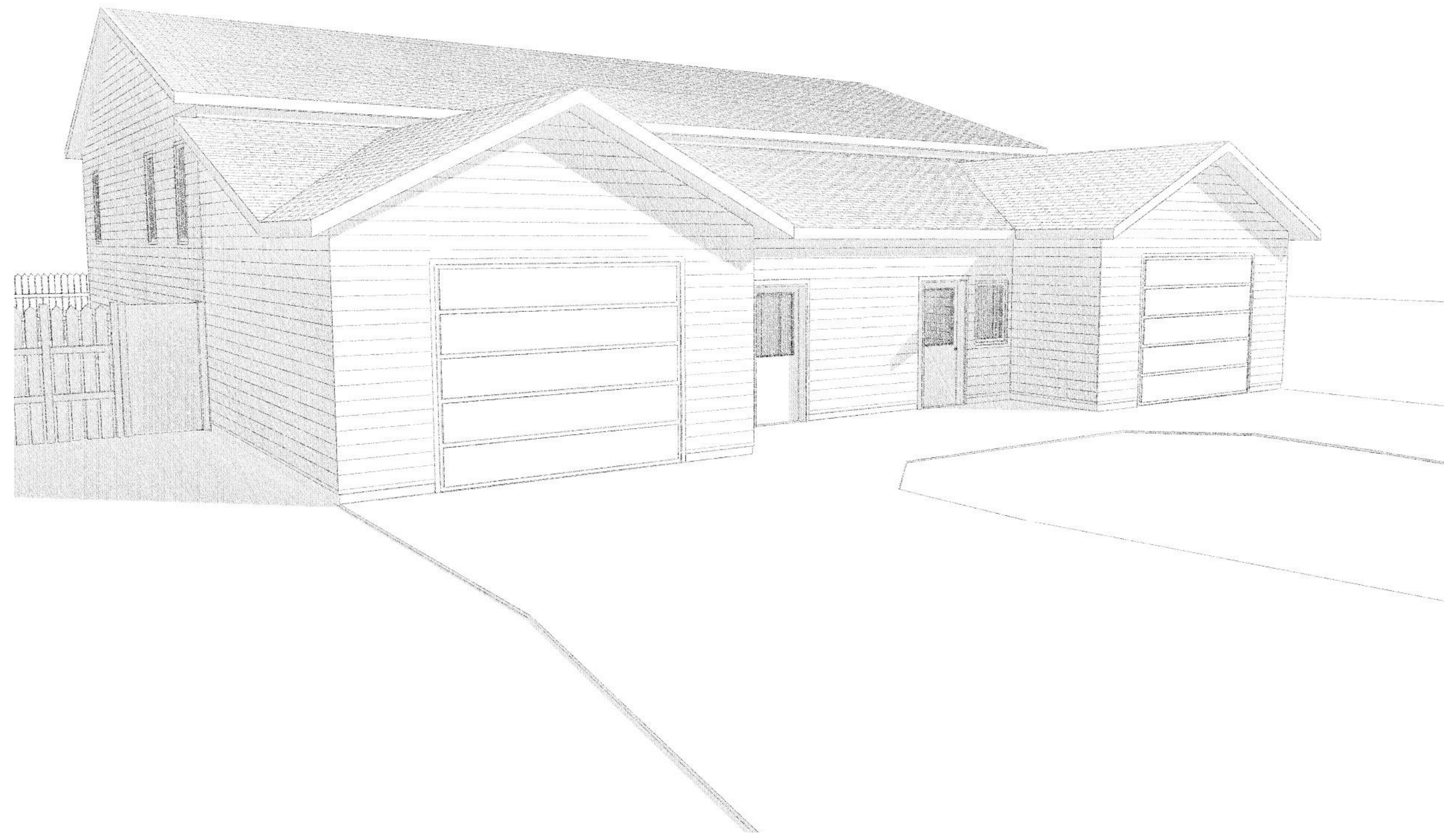


HABITAT TWIN - FARGO

213 & 221 24th Street S

Fargo, 58103



OWNER/CLIENT:
Lake Agassiz Habitat for Humanity
210 11th Street N
Moorhead, MN 56560
p. (218) 359-0362
e. Kyle@lakeagassizhabitat.org
contact: Kyle Pieper

DESIGNER:
Ruki Modern
422 37th Avenue South
Moorhead, MN 56560
p. 701.730.0060
e. rukimodern@gmail.com
contact: Brent Behm

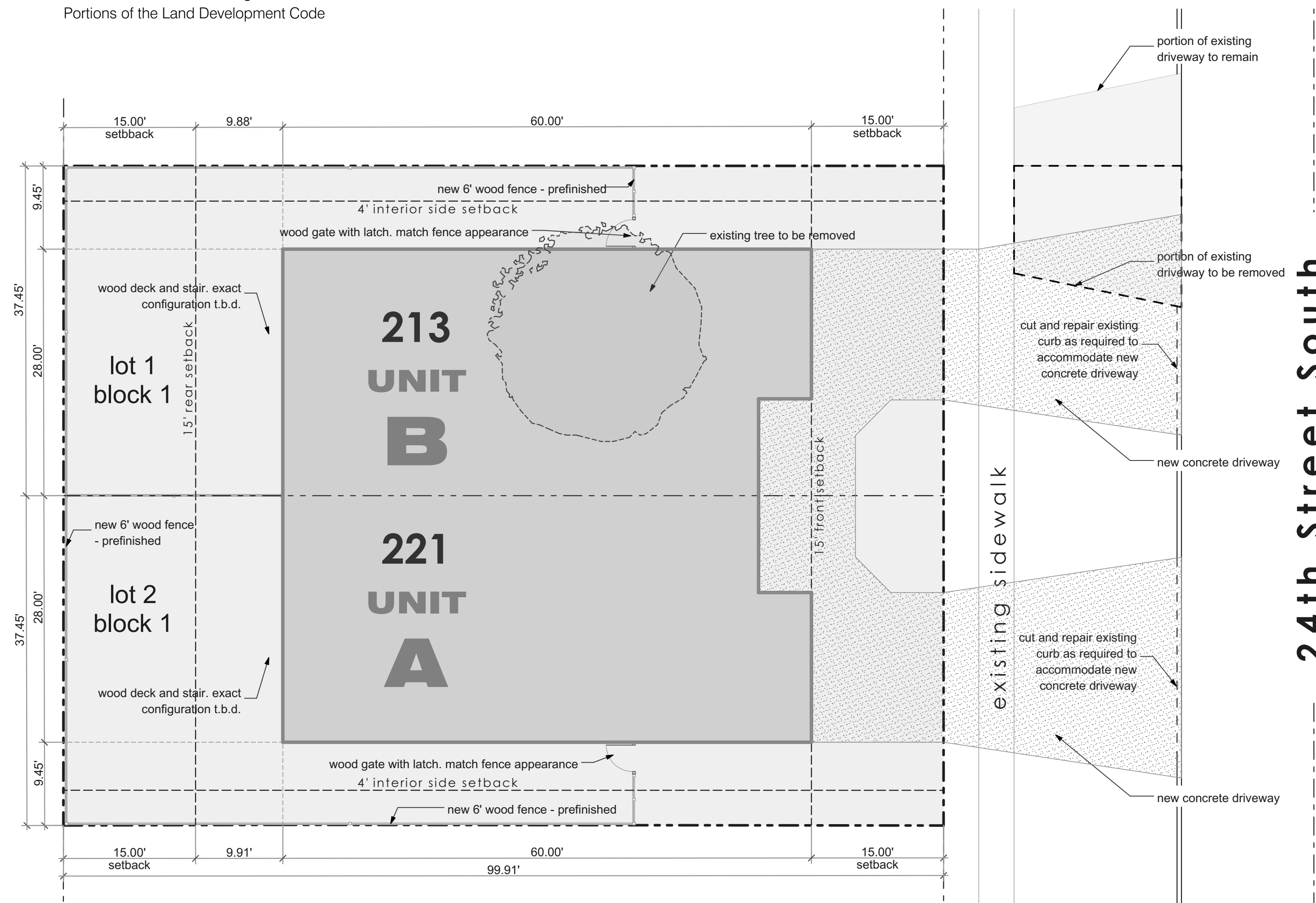
GENERAL CONTRACTOR:
Lake Agassiz Habitat for Humanity
210 11th Street N
Moorhead, MN 56560
p. 218.359.0362
e. Kyle@lakeagassizhabitat.org
contact: Kyle Pieper

APPLICABLE CODES:

The following codes apply to this building:
Fire Protection and Prevention Ordinance 5354
2021 International Energy Conservation Code Local Amendment
2021 International Property Maintenance Code Local Amendment
2021 International Fuel Gas Code Local Amendment
2021 International Mechanical Code Local Amendment
2021 International Existing Building Code Local Amendment
2021 International Residential Code Local Amendment
2021 International Building Code Local Amendment
2018 North Dakota State Plumbing Code Uniform Plumbing Code - 2018
2023 National Electrical Code
2023 Laws, Rules, and Wiring Standards of North Dakota North Dakota
2020 Laws, Rules and Wiring Standards
Portions of the Land Development Code

SHEET INDEX

SHEET	DESCRIPTION
A1	COVER SHEET
A2	LOWER LEVEL PLAN
A3	MAIN LEVEL PLAN
A4	ELEVATIONS
A5	ELEVATIONS
A6	SECTIONS
A7	SECTIONS
A8	WALL SECTIONS
A9	WINDOW & DOOR SCHEDULE



SITE PLAN 1" = 10'

RUKI MODERN

422 37th Ave South
Moorhead, MN 56560
p. 701.730.0060
e. rukimodern@gmail.com

HABITAT TWIN - FARGO

project ID
2023.021

Plans furnished by RUKI MODERN are prepared by designers who are not registered as professional Architects or professional Engineers. RUKI MODERN expressly disclaims any liability whatsoever for errors of any kind which may be found on the plans. Use of such plans shall be at the Sole risk of the User. Any plans furnished by RUKI MODERN are furnished without any warranty that they are suitable for any general or particular purpose. Reliance by any User of these plans and All Responsibilities for the usage and/or calculation of correct structural materials, spans, loads, bearing points and capacities, or application of the art or science of construction based on the principles of mathematics, aesthetics or the physical sciences must be the Responsibility of the Builder, the Owner, or the User of the plans.

Any use, reproduction, copying, modification, or derivative work of the plan(s), sketches, or details furnished by RUKI MODERN, LLC, is a violation of the United States Federal Copyright Act.

drawing date
1/29/2025

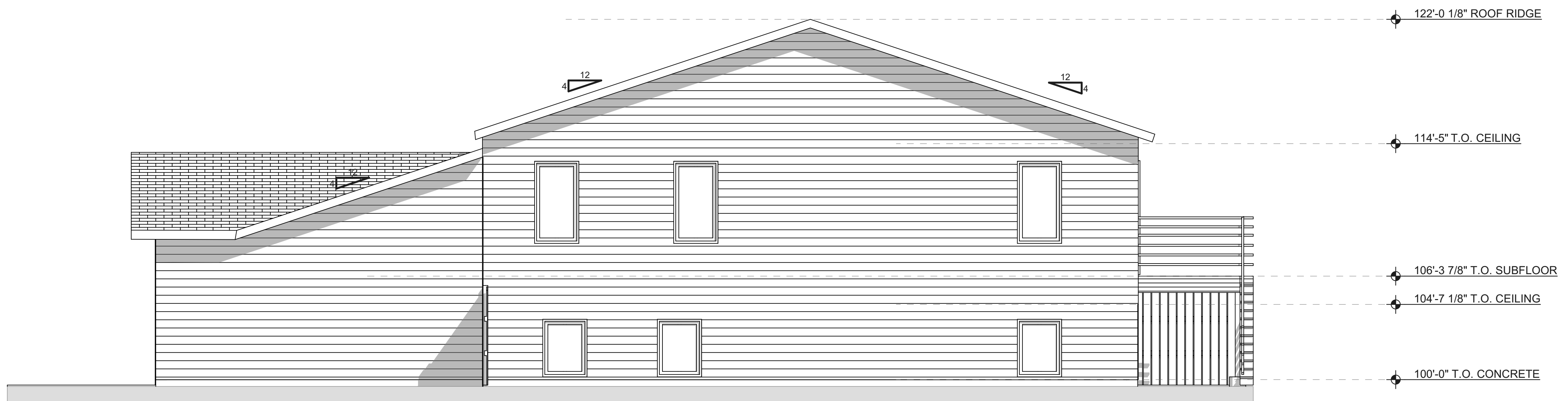
revision	date	description

COVER SHEET

A1



EAST ELEVATION
SCALE: 1/4" = 1'-0"



NORTH ELEVATION
SCALE: 1/4" = 1'-0"

Plans furnished by RUKI MODERN are prepared by designers who are not registered as professional Architects or professional Engineers. RUKI MODERN expressly disclaims any liability whatsoever for errors of any kind which may be found on the plans. Use of such plans shall be at the Sole risk of the User. Any plans furnished by RUKI MODERN are furnished without any warranty that they are suitable for any general or particular purpose. Reliance by any User of these plans and All Responsibilities for the usage and/or calculation of correct structural materials, spans, loads, bearing points and capacities, or application of the art or science of construction based on the principles of mathematics, aesthetics or the physical sciences must be the Responsibility of the Builder, the Owner, or the User of the plans.

Any use, reproduction, copying, modification, or derivative work of the plan(s), sketches, or details furnished by RUKI MODERN, LLC, is a violation of the United States Federal Copyright Act.

drawing date
1/29/2025

revision	date	description

ELEVATIONS

A4

WINDOWS SCHEDULE										
Element ID	AW-01	AW-02	AW-03	AW-04	AW-05	BW-01	BW-02	BW-03	BW-04	BW-05
Nominal W x H Size	2'-6" x 3'-6"	2'-8" x 3'-6"	2'-8" x 3'-6"	2'-8" x 5'-0"	2'-8" x 5'-0"	2'-6" x 3'-6"	2'-8" x 3'-6"	2'-8" x 3'-6"	2'-8" x 5'-0"	2'-8" x 5'-0"
2D Symbol										
View from Opening Side										
U-value	0.25	0.25	0.25	0.25	0.25	0.25	0.25	0.25	0.25	0.25
SHGC	0.20	0.20	0.20	0.20	0.20	0.20	0.20	0.20	0.20	0.20
Quantity	1	2	4	2	2	1	2	4	2	2

DOOR SCHEDULE													
Element ID	AD-01	AD-02	AD-03	AD-04	AD-05	AD-06	BD-01	BD-02	BD-03	BD-04	BD-05	BD-06	
Nominal W x H Size	3'-0" x 6'-8"	3'-0" x 6'-8"	3'-0" x 6'-8"	6'-0" x 6'-8"	4'-0" x 6'-8"	6'-0" x 6'-8"	3'-0" x 6'-8"	3'-0" x 6'-8"	3'-0" x 6'-8"	6'-0" x 6'-8"	4'-0" x 6'-8"	6'-0" x 6'-8"	
2D Symbol													
View from Opening Side													
U-value	0.26						0.26						
SHGC	0.19						0.19						
Quantity	1	6	9	2	2	1	1	6	9	2	2	1	

HABITAT TWIN
- FARGO

project ID
2023.021

Plans furnished by RUKI MODERN are prepared by designers who are not registered as Professional Architects or Professional Engineers. RUKI MODERN expressly disclaims any liability whatsoever for errors of any kind which may be found on the plans. Use of such plans shall be at the Sole Risk of the User. Any plans furnished by RUKI MODERN are furnished without any warranty that they are suitable for any general or particular purpose. Reliance by any User of these plans and All Responsibilities for the usage and/or calculation of correct structural materials, spans, loads, bearing points and capacities, or application of the art or science of construction based on the principles of mathematics, aesthetics or the physical sciences must be the Responsibility of the Builder, the Owner, or the User of the plans.

Any use, reproduction, copying, modification, or derivative work of the plan(s), sketches, or details furnished by RUKI MODERN, LLC, is a violation of the United States Federal Copyright Act.

drawing date
1/29/2025

revision	description	date

WINDOW & DOOR
SCHEDULE
A9